



SCIENCE
BASED
TARGETS

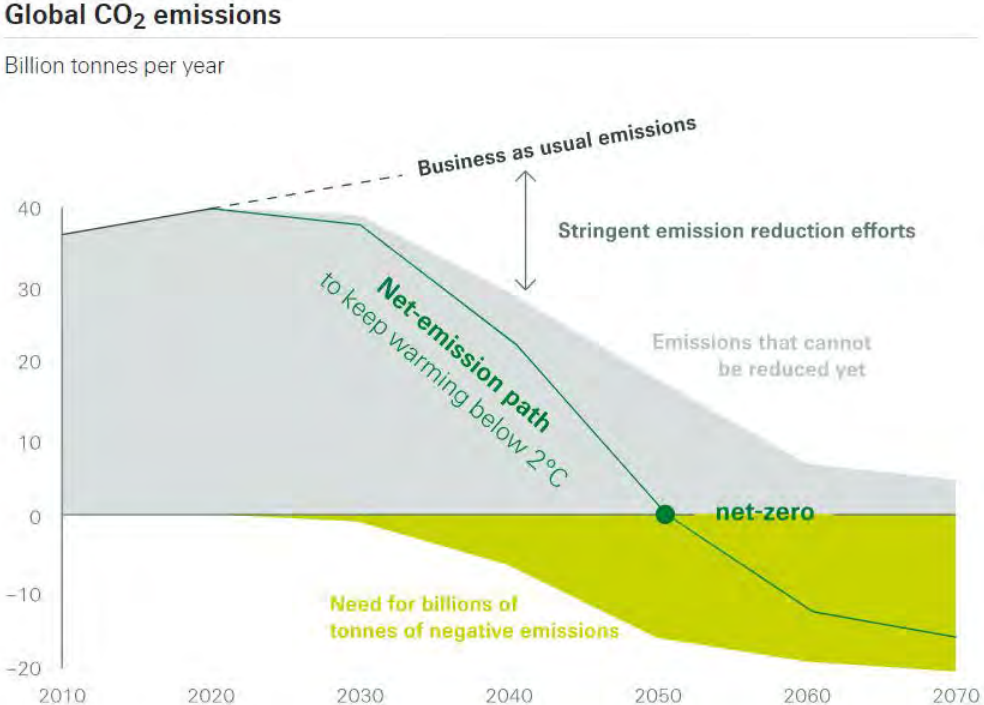
DRIVING AMBITIOUS CORPORATE CLIMATE ACTION

Data Analytics on Science-Based Targets Initiatives

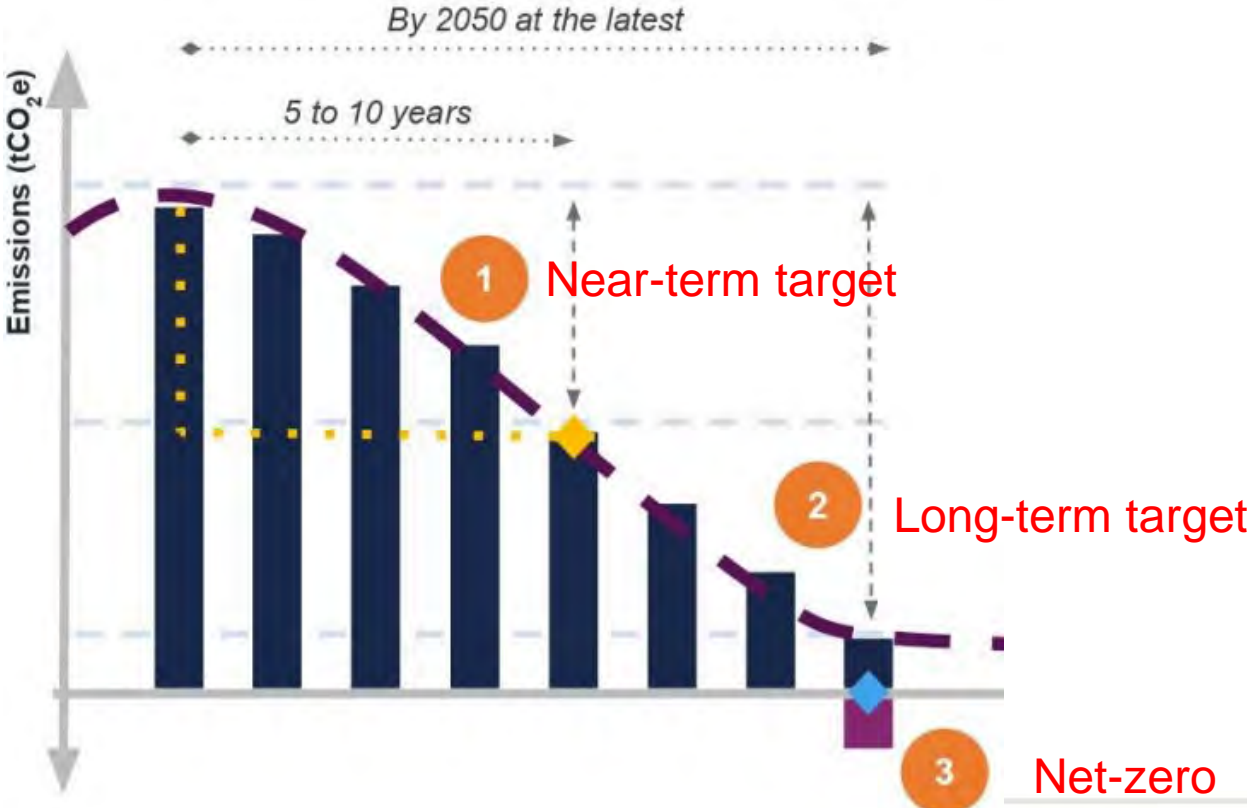
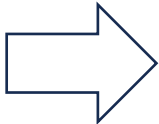
Donghyun (Daniel) Choi, Abhinav Shubham, Manpreet Hora
Scheller College of Business

What Is Science-Based Target?

- ❑ SBTi provide carbon reduction guidelines for firms to be aligned with global carbon budget
- ❑ 8,000 global firms joined SBTi with 3,000 firms set net-zero targets



Global Carbon Budget (IPCC)



Science-Based Target

What Changes Are Required To Align With SBTi?



Landsec

Set Target in 2021
1.5°C by 2030

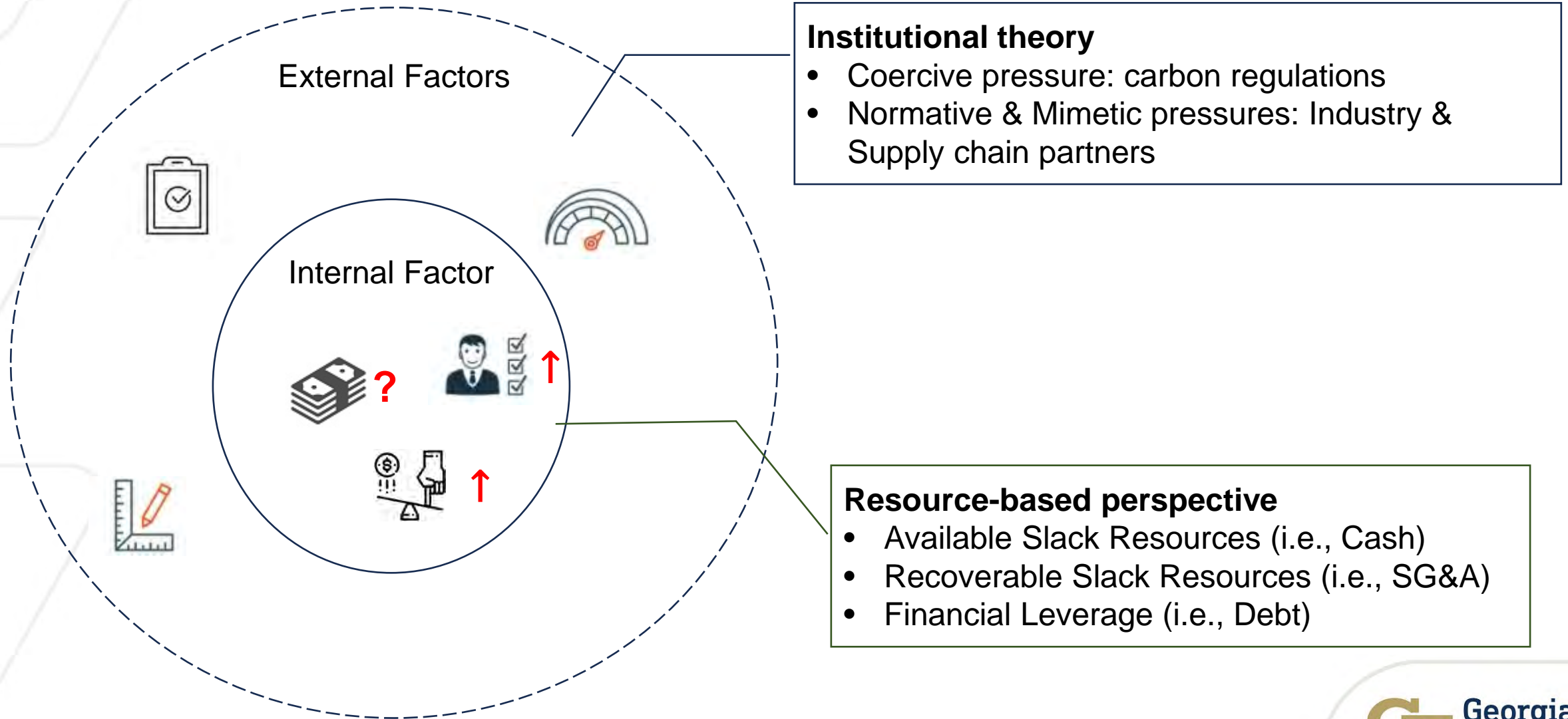
“By May 2016, we had developed a target and had it signed off internally. But when we presented it to the initiative’s experts for approval **we discovered we hadn’t fulfilled the criteria for Scope 3 emissions**. Having done this, we re-submitted our target to the Science Based Targets initiative and they approved it in December 2016. In all, **the process took about a year.**”



Set Target in 2021
Well-below 2°C by 2030

“We now have **fuel cell technology** at our waffle-making facility in San Jose, which generates electricity. **This is the first time Kellogg has explored this sort of thing and it was motivated directly by the emissions reduction target.** We are looking to replicate it in another facility.”

What drives the SBTi commitment?



Takeaways & Future Works



- (1) Setting carbon reduction targets and reducing emissions requires strategic redeployment of existing resources within the firm.
- (2) Firms can identify opportunities during the target-setting process (i.e., project that is profitable while reducing emissions) and spur green innovations.
- (3) Obtain CDP (Carbon Disclosure Project) database to further validate our results
 - **Carbon Abatement Projects**
ex) Renewable Energy, Energy Efficiency, Recycling, Electrification, Behavioral Change
 - **Internal Carbon Pricing**
Including the cost of carbon emissions in making strategic decisions (i.e., investment)

Thank You

Any Questions?



Georgia Tech
Scheller College
of Business