



# Reimagining Eco-Friendly Parking Lot Design Through Simulations

Elizabeth Umanah

# *Presentation Contents*



1. Background
2. Purpose
3. Experimental Design
  - a. Materials
  - b. Methods
4. Results
5. Discussion
6. Conclusions

# Background

- Parking lots are considered impervious surfaces
- **Impervious surfaces** are man-made surfaces covered by water-resistant materials (concrete, asphalt, stone, and brick)
- They contribute to various environmental problems that then create public health and social justice issues
- Downtown Atlanta is covered with parking decks and lots that come up to about 93,000 parking spaces
  - Many spaces sit unoccupied

# Purpose



- Understand the impacts that different construction materials can have on temperature and water quality
- Reimage how parking lots can be designed to not just park cars, but also solve environmental issues
- Test the hypothesis that more sustainable materials will mitigate pollutants from entering into a water body and can cool down an area

# Experimental Design - Materials

Design Type Models



Models and the "Sun"



Just the Design Type



Design type w/ a Bioswale



Sod & Gravel

Concrete

Asphalt



Sod



Carex Stricta

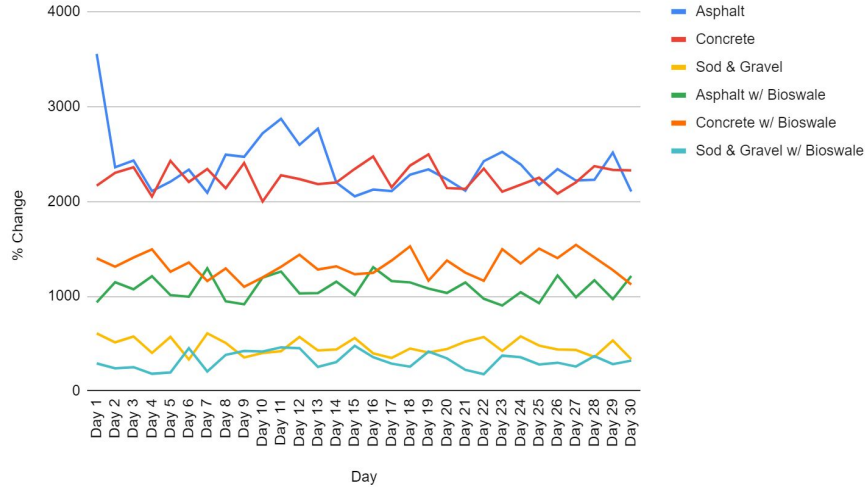


# Experimental Design - Methods

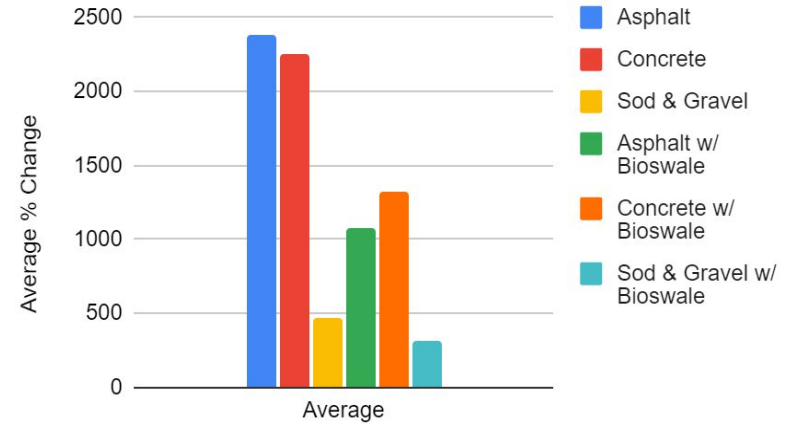
- The lights will be on the models 5 hours each day
- In each model, the Water Body column will include a some water
- At the same time each day water with table salt will be poured into the model to simulate a rain event
  - The amount poured in is the same amount that is in the the Water Body column
  - This will go on for 30 days
- Before each pour measurements will be taken
  - Temperature of the Water Body column water and the surface in the Design Type column
  - Salinity of the external water and Water Body column
- The same volume of water, but with table salt will be poured into the model
  - The Design Type column in each model is slanted at a 15° angle
- After each pour measurements will be taken
  - Temperature of the Water Body column water and the surface in the Design Type column
  - Salinity of the Water Body column
- Before and after measurements will be compared and analyzed over the 30 days

# Results - Salinity

Percent Change of Salinity

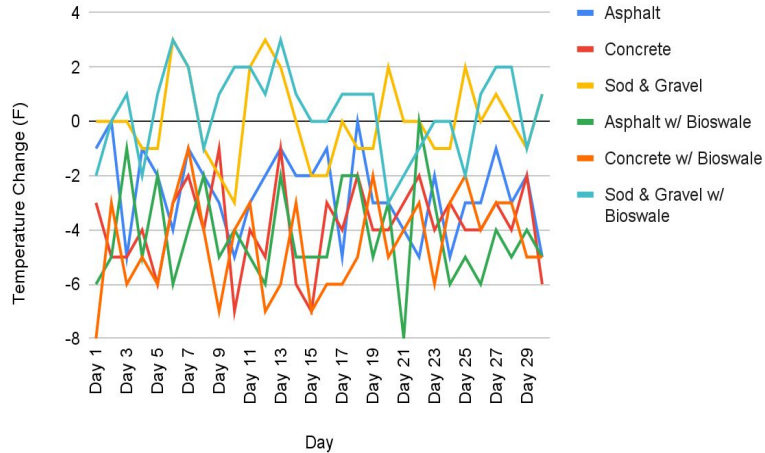


Average Salinity Percent Change

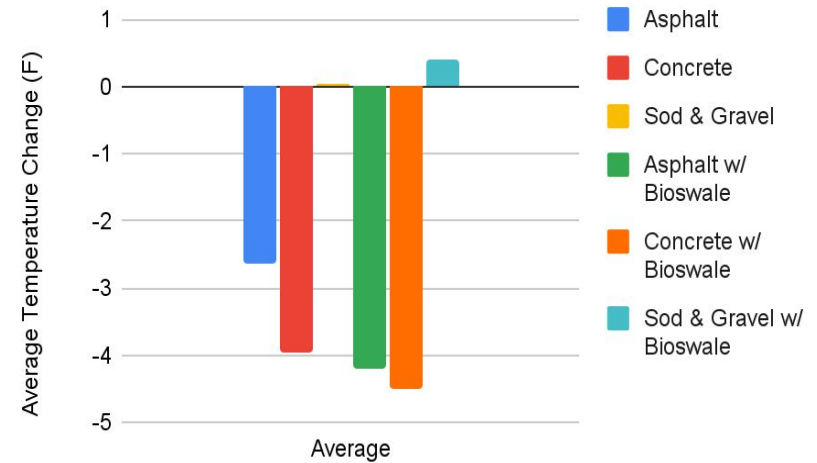


# Results - Surface Temperature

Surface Temperature Change



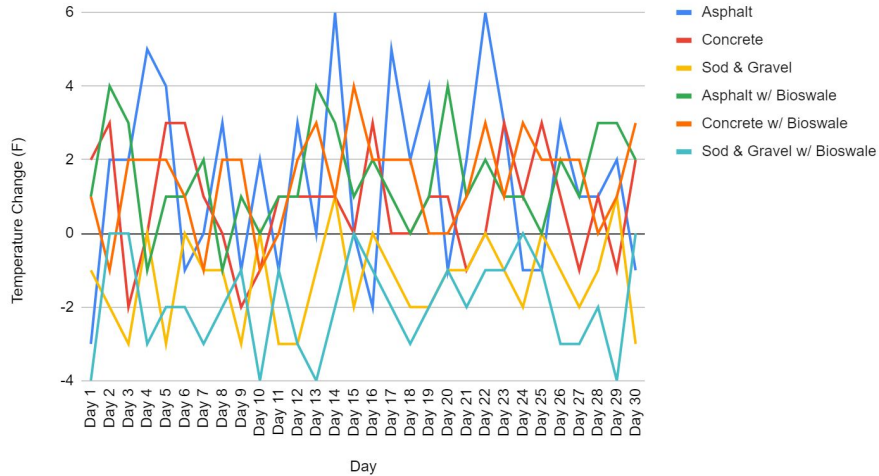
Average Surface Temperature Change



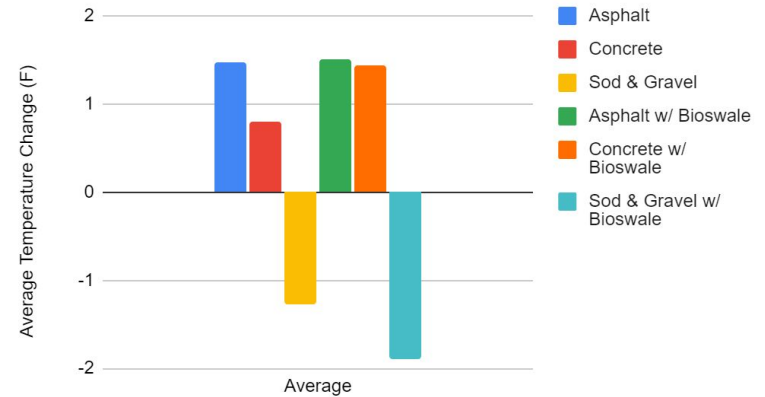


# Results - Water Temperature

Water Column Temperature Change



Average Water Column Temperature Change (F)



# Discussion



- Trends that I noticed:
  - The smaller the percent change in the salinity level, the more “pollutants” were mitigated
  - The smaller the average change in surface temperature, the better the material was at keeping a surface cooler
  - The smaller the average change in the Water Column temperature, the less the water heated up after each pour
- My hypothesis was proven correct
  - The sustainable materials (sod, gravel, and bioswale) mitigates “pollutants” and kept the area cooler

# Conclusion

- This can be used as a framework to visually examine the environmental impacts of new construction materials used for the built environment on a small scale
- Can be used to customize specific materials to specific environments

# *Thank you! Let's Connect!*

**Master of Sustainable Energy and  
Environmental**

**Fellow**



**Contact Info**

[eumanah3@gatech.edu](mailto:eumanah3@gatech.edu)

[www.OffGreenThumb.com](http://www.OffGreenThumb.com)

Scan for LinkedIn



Elizabeth Umanah  
Georgia Institute of Technology  
Master of Sustainable Energy & Environmental Management  
Graduate Fellow  
April 18, 2023